

FY 2026-27

# ENGINEER'S REPORT

## Orangevale Recreation and Park District

Kenneth Grove Assessment District

June 2026

Engineer of Work:

**SCIConsultingGroup**

Public Finance Consulting Services

4745 Mangels Boulevard  
Fairfield, California 94534  
707.430.4300  
[www.sci-cg.com](http://www.sci-cg.com)

This page intentionally left blank.

## Kenneth Grove Assessment District

---

### **Board of Directors**

Sharon Brunberg, Chair  
Lisa Montes, Vice Chair  
Arica Presinal, Secretary  
Manie Meraz, Director  
Michael Stickney, Director

---

### **District Administrator**

Becky Herz

---

### **District's Attorney**

David W. McMurchie

---

### **Engineer of Work**

SCI Consulting Group

---

This page intentionally left blank

## Table of Contents

<i>Board of Directors</i>	<i>i</i>
<i>District Administrator</i>	<i>i</i>
<i>District's Attorney</i>	<i>i</i>
<i>Engineer of Work</i>	<i>i</i>
<b>Introduction</b>	<b>1</b>
Formation of Assessment District	1
<i>Exemptions from Proposition 218</i>	2
Substantive Requirements of Proposition 218	4
<i>Silicon Valley Taxpayers Association, Inc. v Santa Clara County Open Space Authority</i>	4
<b>Plans &amp; Specifications</b>	<b>6</b>
<b>Fiscal Year 2026-27 Estimate of Cost and Budget</b>	<b>7</b>
<b>Method of Apportionment</b>	<b>8</b>
Method of Apportionment	8
Discussion of Benefit	8
Method of Assessment	11
Assessment Apportionment	11
<b>Assessment</b>	<b>12</b>
<b>Assessment Diagram</b>	<b>14</b>
<b>Appendix A - 2026-27 Assessment Roll</b>	<b>15</b>

This page intentionally left blank

## Introduction

### Formation of Assessment District

The Kenneth Grove Assessment District was formed pursuant the Landscaping and Lighting Act of 1972 by the Orangevale Recreation and Park District commencing with Resolution No. 94-02-83 dated February 10, 1994 (hereinafter the "Resolution of Intention"). The Resolution of Intention provides the following: (1) formation of the Kenneth Grove Landscaping and Lighting Assessment District; and (2) a description of the improvements which the Assessment District is authorized to construct and maintain including the following: (a) installation of sound walls and other ornamental structures and facilities which are necessary or convenient for the maintenance or servicing of curbs, gutters, walls, sidewalks, paving, water irrigation, drainage or electrical facilities; and (b) land preparation such as grading, leveling, cutting and filling, sod landscaping, irrigation systems, sidewalks and drainage; and (c) the maintenance or servicing of all of the above including repair, removal or replacement of all or part of any improvement or other typical maintenance services.

The Engineer's Report, diagram and assessment and Resolution of Formation of the Kenneth Grove Landscaping and Lighting Assessment District was adopted by the Board of Directors of Orangevale Recreation and Park District by Resolution No. 94-05-86A on May 12, 1994. That resolution confirmed the findings in the Resolution of Intention and was adopted after a public hearing during which members of the public were offered the opportunity to protest against the formation of the Assessment District. The Resolution of Formation notes that the owners of the affected properties included within the proposed Assessment District have filed with the District written consents to the proposed formation of the Kenneth Grove Landscaping and Lighting Assessment District and the proposed levying of assessments as specified in the Engineer's Report. The Resolution of Formation included a provision that a perpetual contingency reserve fund be established in the amount of the first year's total assessment revenue to be paid by the developer by agreement in order to cover the costs of any contingencies which may occur throughout the duration of the Assessment District. The Resolution of Formation also provided that should any new subdivision be annexed into the Kenneth Grove Landscaping and Lighting Assessment District in the future, that a separate perpetual contingency reserve fund is required to be established for operations within that particular annexed area calculated as the amount of the first year's assessment levied against real property within that annexed area to be paid by the developer of the annexed area to fund contingencies with respect to maintenance and operations in future years with respect to the property annexed to the Assessment District.

The initial assessment levied upon each parcel of real property within the Kenneth Grove Assessment District for fiscal year 1994-95 was \$150.78 per parcel. The Kenneth Grove Assessment District has continued to levy the same annual assessment per parcel of \$150.78 per fiscal year from the date of formation to the present time.

The Kenneth Grove Assessment District was also formed for the purposes of providing park and recreational improvements in addition to landscape corridors and streetscapes to the residents of the assessment district. The Assessment District may utilize assessment revenue to fund these additional purposes in the future.

---

### **Exemptions from Proposition 218**

Having been formed in 1994, the Kenneth Grove Assessment District assessments were existing on November 6, 1996, the effective date of Article XIID of the California Constitution (Proposition 218). Proposition 218 identified preexisting assessments which fell within one of four exemptions identified in section 5 of Article XIID as exempt from the procedures and approval process for assessments detailed in Proposition 218.

The four "exemptions" delineated in Proposition 218 that are applicable to the Kenneth Grove Assessment District are as follows:

- (1) Any assessment imposed exclusively to finance the capital cost or maintenance and operation expenses for sidewalks, streets, sewers, water, flood control, drainage systems, or vector control (Cal. Const., art. XIID, § 5, subd. (a)); and
- (2) Any assessment imposed pursuant to a petition signed by the persons owning all of the parcels subject to the assessment at the time the assessment is initially imposed (Cal. Const., art. XIID, § 5, subd. (b)).

Both of these exemptions from the provisions of Proposition 218 apply to the Kenneth Grove Assessment District. First, the Assessment District was formed pursuant to a petition signed by all of the current owners of the real property subject to the assessment (the developer of the Kenneth Grove Subdivision) at the time the assessment was initially imposed which meets the requirements of California Constitution Article XIID, section 5(b).

In addition, the initial purpose of the assessment was to finance the capital costs and maintenance and operation costs for constructing sidewalks, sidewalk and street landscaping, irrigation and drainage to enhance the parcels of property comprising the Kenneth Grove Assessment District.

Both of these exemptions from the procedures and approval process for assessments specified in Proposition 218 have been satisfied within the Kenneth Grove Assessment District.

First, the exemption which is an assessment imposed by a petition signed by the persons owning all the parcels subject to the assessment at the time the assessment is initially imposed is evidenced by the Resolutions of the District and the written consents filed by the then current owners of the real property subject to the assessment in 1994 before the Assessment District was formed.

The second exemption available for capital and maintenance costs associated with sidewalks, streets, and landscaping and irrigation associated with sidewalks and streets is supported by case law decided under the provisions of California Constitution Article XIID, section 5(b) (hereinafter "Proposition 218"). The Board of Directors of the District has adopted the position that street and sidewalk landscaping is an integral part of "streets" and "sidewalks" and therefore an existing assessment for the maintenance of such landscaping is exempt under Proposition 218. Streets and Highways Code section 29 provides that "roadside planting and weed control" is included within the definition of construction and maintenance of streets.

The assessments levied within the Kenneth Grove Assessment District prior to the passage of Proposition 218 are exempt under both of these exceptions articulated in Proposition 218.

Those procedures and approval processes with respect to which the Kenneth Grove Assessment District is exempt are as follows:

- (1) Procedural requirements regarding the imposition of assessments including (a) identification of all parcels which will have special benefit conferred upon them by the improvements or services funded by the assessment; and (b) differentiation between "special benefit" and "general benefit" conferred on properties from the improvement and/or services funded with assessment proceeds; and (c) allocation of assessments per parcel dependent upon the proportion of special benefit to each property in relationship to the entirety of the costs of acquiring or constructing an improvement or of maintaining and operating such an improvement among the parcels to be assessed; and (d) the assessment on a parcel may not exceed the reasonable cost of the "proportional special benefit" conferred on that parcel by the improvements or services funded with assessment proceeds; and (e) procedural requirements including the 45-day mailed notice to property owners of the proposed assessment; an opportunity for property owners to protest by ballot against the proposed assessment at a public hearing; and prohibition of any assessment if a majority protest exists, A "majority protest" is defined as ballots from property owners submitted in opposition to the assessments amounting to more than 50% of the total ballots submitted by property owners, with ballots submitted weighted according to the proportional financial obligation for paying assessments for each affected parcel.

In light of the fact that the Kenneth Grove Assessment District was formed prior to the imposition of Proposition 218 on November 6, 1996 and complies with the definitions of two of the exemptions in Proposition 218 as specified above, the assessments levied within the Kenneth Grove Assessment District are exempt from the substantive and procedural requirements outlined above.

Despite that exemption, this Engineer's Report specifies the facts and circumstances demonstrating that the assessments levied within the Kenneth Grove Assessment District comply with the substantive requirements of Proposition 218.

### **Substantive Requirements of Proposition 218**

#### **Silicon Valley Taxpayers Association, Inc. v Santa Clara County Open Space Authority**

In July of 2008, the California Supreme Court issued its ruling on the Silicon Valley Taxpayers Association, Inc. v. Santa Clara County Open Space Authority ("SVTA"). This ruling is the most significant court case in further legally clarifying the substantive assessment requirements of Proposition 218. Several of the most important elements of the ruling included further emphasis that:

- Benefit assessments are for special, not general, benefit

- The services and/or improvements funded by assessments must be clearly defined
- Special benefits are directly received by and provide a direct advantage to property in the assessment district

This Engineer's Report is consistent with the SVTA decision and with the requirements of Article 13C and 13D of the California Constitution because the improvements to be funded are clearly defined; the benefiting property in the Assessment District enjoys close and unique proximity, access and views to the Improvements; the Improvements serve as an extension of usable land area for benefiting properties in the Assessment District and such special benefits provide a direct advantage to property in the Assessment District that is not enjoyed by the public at large or other property.

## Plans & Specifications

The work and improvements proposed to be undertaken by the Orangevale Recreation and Park District's Kenneth Grove Assessment District (the "Assessment District") and the cost thereof paid from the levy of the annual assessment provide special benefit to Assessor Parcels within the Assessment District as defined in the Method of Assessment herein. In addition to the definitions provided by the Landscaping and Lighting Act of 1972, (the "Act") the work and improvements are generally described as follows:

Installation, maintenance and servicing of public recreational facilities and improvements including landscape corridors, streetscapes and other park and recreational improvements. The plans and specifications for these improvements have been filed with the District Administrator of the Orangevale Recreation and Park District and are incorporated herein by reference.

As applied herein, "Installation" means the construction of recreational improvements, including, but not limited to, land preparation, such as grading, leveling, cutting and filling, sod, landscaping, irrigation systems, sidewalks and drainage, lights, playground equipment, play courts, recreational facilities and public restrooms.

"Maintenance" means the furnishing of services and materials for the ordinary and usual maintenance, operation and servicing of any improvement, including repair, removal or replacement of all or any part of any improvement; providing for the life, growth, health, and beauty of landscaping, including cultivation, irrigation, trimming, spraying, fertilizing, or treating for disease or injury; the removal of trimmings, rubbish, debris, and other solid waste, and the cleaning, sandblasting, and painting of walls and other improvements to remove or cover graffiti.

"Servicing" means the furnishing of electric current, or energy, gas or other illuminating agent for any public lighting facilities or for the lighting or operation of any other improvements; or water for the irrigation of any landscaping, the operation of any fountains, or the maintenance of any other improvements.

## Fiscal Year 2026-27 Estimate of Cost and Budget

	<b>Total Budget</b>
<b>Installation, Maintenance &amp; Servicing Costs</b>	
Improvements	\$13,000
<b>Operating Expenses</b>	
Ag/Horticulture Services & Supplies	\$2,000
Water	\$1,100
Fuel	\$1,100
Maintenance Contract	\$0
Subtotal	\$4,200
<b>Incidental Expenses</b>	
Advertising/Legal Notices	\$200
Administration & Inspection	\$950
Annual Engineer's Report	\$1,000
Professional Services	\$1,300
Other Expenses	\$500
Subtotal	\$3,950
<b>Contribution to/(from) Reserves Fund Balance Available</b>	
Contribution to (from) Contingency	(\$15,722)
Total Landscaping and Lighting Assessment District Budget (Net Amount to be Assessed)	\$5,428
<b>Budget Allocation to Property</b>	
Total Assessment Budget	\$5,428
Single Family Equivalent Benefit Units	36.00
Assessment per Single Family Equivalent Unit	\$150.78

## Method of Apportionment

### Method of Apportionment

This section of the Engineer's Report includes an explanation of the benefits to be derived from the installation, maintenance and servicing of park facilities throughout the Park District, and the methodology used to apportion the total assessment to properties within the Assessment District.

The Assessment District consists of all Assessor Parcels within the boundaries of the Assessment Diagram as included within this Engineer's Report. The method used for apportioning the assessment is based upon the proportional special benefits to be derived by the properties in the Assessment District over and above general benefits conferred on real property or to the public at large. The apportionment of special benefit is a two step process: the first step is to identify the types of special benefit arising from the improvements, and the second step is to allocate the assessments to property based on the estimated relative special benefit for each type of property.

### Discussion of Benefit

In summary, the assessments can only be levied based on the special benefit to property. This benefit is received by property over and above any general benefits. Moreover, such benefit is not based on any one property owner's use of the Park District's recreational facilities or a property owner's specific demographic status. With reference to the requirements for assessments, Section 22573 of the Landscaping and Lighting Act of 1972 states:

"The net amount to be assessed upon lands within an assessment district may be apportioned by any formula or method which fairly distributes the net amount among all assessable lots or parcels in proportion to the estimated benefits to be received by each such lot or parcel from the improvements."

Proposition 218, as codified in Article XIII D of the California Constitution, has confirmed that assessments must be based on the special benefit to property and that the value of the special benefits must reasonably exceed the cost of the assessment:

"No assessment shall be imposed on any parcel which exceeds the reasonable cost of the proportional special benefit conferred on that parcel."

The Kenneth Grove Assessment District consists solely of residential parcels populated with single family residences which receive the benefit of sidewalks and streetscape landscaping constructed adjacent to major streets within the subdivision, which improvements were constructed by the developer of the subdivision and are maintained by the Kenneth Grove Assessment District. The Assessment District also was formed with the power to levy assessments for additional park and recreational improvements to serve the residents of the assessment district. All of the parcels within the boundaries of the Assessment District enjoy close proximity to the sidewalk and streetscape improvements constructed and maintained with assessment proceeds. The Assessment District consists of only 36 parcels comprising the subdivision, and the improvements consisting of sidewalk and streetscape landscaping and maintenance uniquely benefit this small subdivision as a "special benefit." Existing improvements are not of sufficient magnitude to significantly benefit adjacent residential parcels located outside the Assessment District.

The following benefit categories summarize the types of special benefit to residential parcels resulting from the installation, maintenance and servicing of existing sidewalk and streetscape landscaping improvements and future park and recreational improvements to be provided with the assessment proceeds. These categories of special benefit are summarized as follows:

- a. Extension of a walkable areas and green spaces for properties within close proximity to the Improvements.
- b. Proximity to improved sidewalks and streetscape landscaping and other park and recreational improvements.
- c. Access to improved sidewalks and landscaping and other park and recreational improvements constructed to serve the residents and property of the assessment district.
- d. Improved local views regarding sidewalk and streetscape landscaping and future park and recreational improvements.

In this case, the recent the SVTA decision provides enhanced clarity to the definitions of special benefits to properties in three distinct areas:

- Proximity
- Expanded or improved access
- Views

The SVTA decision also clarifies that a special benefit is a service or improvement that provides a direct advantage to a parcel and that indirect or derivative advantages resulting from the overall public benefits from a service or improvement are general benefits. The SVTA decision also provides specific guidance that landscape and park and recreational improvements are a direct advantage and special benefit to property that is proximate to such landscape and park and recreational improvements constructed and maintained with assessment proceeds:

*the characterization of a benefit may depend on whether the parcel receives a direct advantage from the improvement (e.g. proximity to a park) or receives an indirect, derivative advantage resulting from the overall public benefits of the improvement (e.g. general enhancement of the district's property values).*

Proximity, improved access and views, in addition to the other special benefits listed above further strengthen the argument that these assessments comply with the provisions of Proposition 218, despite the fact that they are exempt from such constitutional requirements as set forth above.

Although it could be argued that there are no general benefits from these Improvements, it is possible that there are some visual benefits received by parcels which are not in the Assessment District. This is a measure of the general benefits to the public at large. We estimate this benefit to be no more than 5%.

Special Benefit	95%
General Benefit	5%
Total Benefit	100%

The maintenance and servicing of these Improvements is also partially funded, directly and indirectly, from other sources including the Orangevale Recreation and Park District, County of Sacramento, the local water provider, and the State of California. This funding may come in the form of grants, development fees, special programs, and general funds, as well as direct maintenance and servicing of facilities (e.g., curbs, gutters, streets, drainage systems, etc.). This funding from other sources more than compensates for general benefits, if any, received by the properties within the Assessment District. The sum total of this contribution exceeds the 5% minimum needed to offset any general benefit, as noted above.

Therefore, despite its exemptions from the procedural and substantive requirements of Proposition 218, the Kenneth Grove Assessment District complies with the substantive requirements of Proposition 218 regarding the differentiation between special benefit to properties within the assessment district from the improvements and maintenance funded with assessment proceeds and general benefit to properties outside the assessment district.

## Method of Assessment

The second step in apportioning assessments is to determine the relative special benefit for each property. This process involves determining the relative benefit received by each property in relation to a single family home, or, in other words, on the basis of Single Family Equivalents (SFE). This SFE methodology is commonly used to distribute assessments in proportion to estimated special benefit and is generally recognized as providing the basis for a fair and appropriate distribution of assessments. For the purposes of this Engineer's Report, all properties are designated a SFE value, which is each property's relative benefit in relation to a single family home on one parcel. In this case, the "benchmark" property is the single family detached dwelling which is one Single Family Equivalent or one SFE.

## Assessment Apportionment

The benefits from the Assessment District are deemed to be received by property on a dwelling unit basis, with equal benefit to each dwelling unit on a parcel. Therefore, all improved residential properties that represent a single residential dwelling unit are assigned one Single Family Equivalent or 1.0 SFE. Traditional houses, zero-lot line houses and town homes are included in this category. Multi-family parcels are also assigned one SFE per dwelling unit. Property owned by the District does not benefit from the assessments and therefore is assigned zero SFE units. Currently, all assessed properties within the Assessment District are in single family residential use.

## Assessment

WHEREAS, on February 19, 2026 the Board of the Orangevale Recreation and Park District adopted its resolution initiating proceedings for the levy of assessments within the Assessment District and authorizing the Orangevale Recreation and Park District, County of Sacramento, California, pursuant to the provisions of the Landscaping and Lighting Act of 1972 and Article XIID of the California Constitution (collectively “the Act”), to proceed with the proposed levy of assessments;

WHEREAS, said Resolution directed the undersigned Engineer of Work to prepare and file a report presenting an estimate of costs, a diagram for the assessment district and an assessment of the estimated costs of the improvements upon all assessable parcels within the assessment district, to which Resolution and the description of said proposed improvements therein contained, reference is hereby made for further particulars;

NOW, THEREFORE, the undersigned, by virtue of the power vested in me under said Act and the order of the Board of said Orangevale Recreation and Park District, hereby make the following assessment to cover the portion of the estimated cost of said improvements, and the costs and expenses incidental thereto to be paid by the assessment district.

The amount to be paid for said improvements and the expense incidental thereto, to be paid by the Assessment District for the fiscal year 2026-27 is generally as follows:

SUMMARY COST ESTIMATE		FY 2026-27 Budget
Capital Improvements and Maintenance Expenditures	\$17,200	
Incidental Expenses	\$3,950	
TOTAL BUDGET		\$21,150
Less: Contributions		
Contributions to/(from) Reserves and Contingency		(\$15,722)
NET AMOUNT TO ASSESSMENTS		\$5,428

As required by the Act, an Assessment Diagram is hereto attached and made a part hereof showing the exterior boundaries of said Assessment District. The distinctive number of each parcel or lot of land in the said Assessment District is its Assessor Parcel Number appearing on the Assessment Roll.

I do hereby assess and apportion said net amount of the cost and expenses of said improvements, including the costs and expenses incident thereto, upon the parcels and lots of land within said Assessment District, in accordance with the special benefits to be received by each parcel or lot, from the improvements, and more particularly set forth in the Cost Estimate and Method of Assessment hereto attached and by reference made a part hereof.

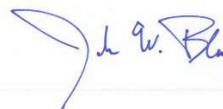
The assessment is made upon the parcels or lots of land within the Assessment District in proportion to the special benefits to be received by the parcels or lots of land, from said improvements.

Each parcel or lot of land is described in the Assessment Roll by reference to its parcel number as shown on the Assessor's Maps of the County of Sacramento for the fiscal year 2026-27. For a more particular description of said property, reference is hereby made to the deeds and maps on file and of record in the office of the County Recorder of said County.

I hereby place opposite the Assessor Parcel Number for each parcel or lot within the Assessment Roll, the amount of the assessment for the fiscal year 2026-27 for each parcel or lot of land within the said Assessment District.

Dated: May 8, 2026

Engineer of Work



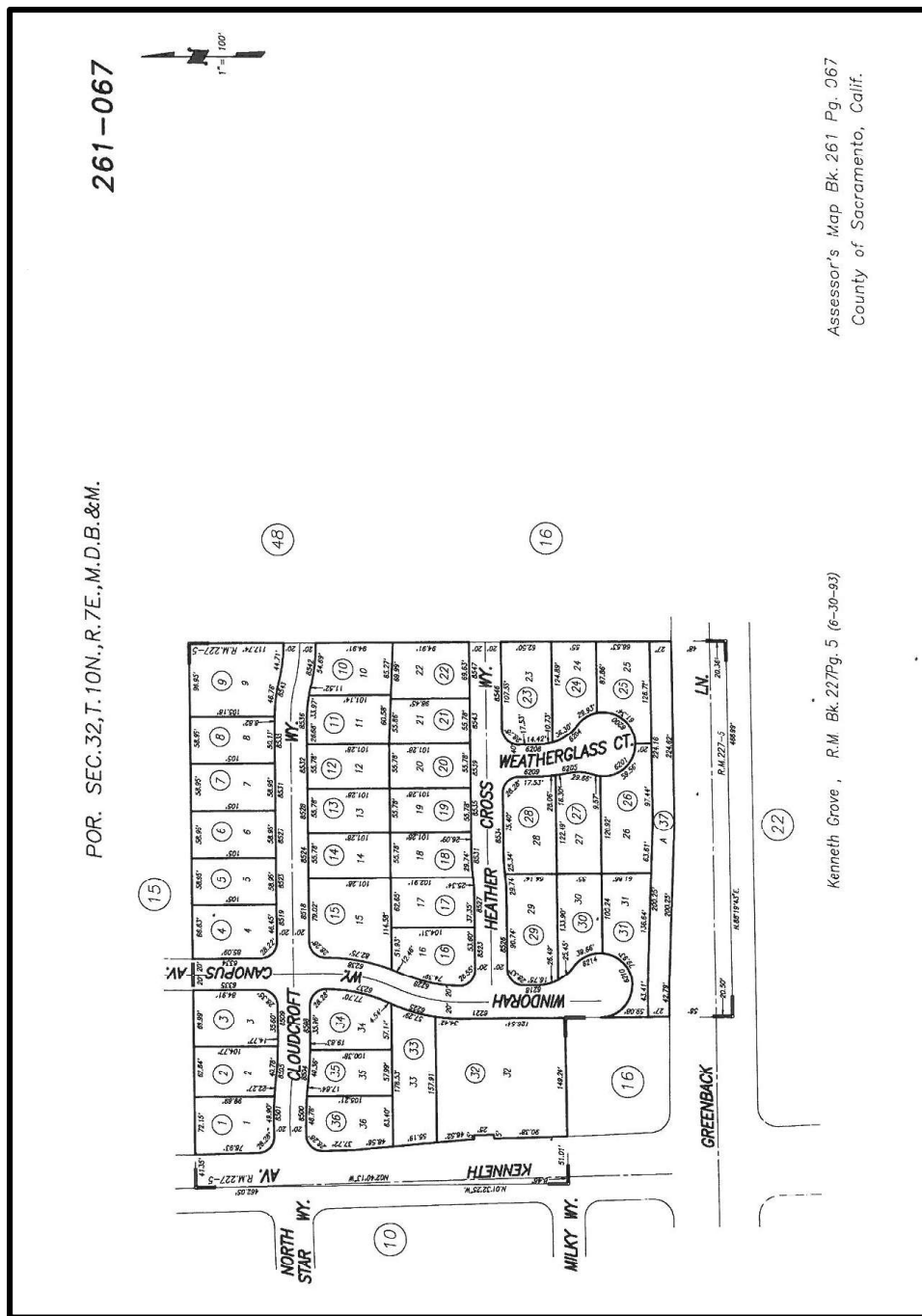
By \_\_\_\_\_

John W. Bliss, License No. C052091



# Assessment Diagram

The boundaries of the Assessment District are displayed on the Assessment Diagram below.



## Appendix A - 2026-27 Assessment Roll

**Orangevale RPD,  
Orangevale RPD Kenneth Grove  
Assessment Roll FY 2026-27**

Assessment Number & Assessor Parcel Number	Owner Name(s)	Site Address	SFE Units	Assess- ment	Assessment Number & Assessor Parcel Number
26106700350000	BALAKRISHNA VI	8504 CLOUDCROF	1	\$150.78	
26106700200000	BALLUCH TIMOTH	8539 HEATHER C	1	\$150.78	
26106700140000	BASUNI BEN	8524 CLOUDCROF	1	\$150.78	
26106700020000	BELMONTE FAMIL	8505 CLOUDCROF	1	\$150.78	
26106700180000	BERNHARDT JACO	8531 HEATHER C	1	\$150.78	
26106700150000	CANTALINO CARM	6238 WINDORAH	1	\$150.78	
26106700360000	CHAVEZ ALBERTO	8500 CLOUDCROF	1	\$150.78	
26106700060000	DALE BARTLETT	8527 CLOUDCROF	1	\$150.78	
26106700070000	DARLEEN M GURW	8531 CLOUDCROF	1	\$150.78	
26106700110000	DAVID WRIGHT/C	8536 CLOUDCROF	1	\$150.78	
26106700280000	DIAZ GONZALEZ	6209 WEATHERGL	1	\$150.78	
26106700240000	FORD THOMAS	6204 WEATHERGL	1	\$150.78	
26106700040000	GOLTZ SURVIVOR	8519 CLOUDCROF	1	\$150.78	
26106700010000	GRISCHENKO FAM	8501 CLOUDCROF	1	\$150.78	
26106700270000	GROVER MORRIS	6205 WEATHERGL	1	\$150.78	
26106700050000	IRMA DOT LEBAS	8523 CLOUDCROF	1	\$150.78	
26106700330000	JOAN D OXFORD	6225 WINDORAH	1	\$150.78	
26106700080000	JOHNSON JEAN F	8535 CLOUDCROF	1	\$150.78	
26106700340000	KING JESSICA	8508 CLOUDCROF	1	\$150.78	
26106700210000	LE NIKKI KHIET	8543 HEATHER C	1	\$150.78	
26106700030000	MANUEL R/IRIS	8509 CLOUDCROF	1	\$150.78	
26106700230000	MARK J CHRISTE	6208 WEATHERGL	1	\$150.78	
26106700170000	MAXIMA BARTLET	8527 HEATHER C	1	\$150.78	
26106700250000	MAXIMA BARTLET	6200 WEATHERGL	1	\$150.78	
26106700310000	MELEOBELLE LP	6210 WINDORAH	1	\$150.78	
26106700120000	MORADICHALOO S	8532 CLOUDCROF	1	\$150.78	
26106700370000	ORANGEVALE REC	GREENBACK LN	0	\$0.00	
26106700160000	PAMELA JEAN HE	8523 HEATHER C	1	\$150.78	
26106700090000	PEDERSEN JAMES	8543 CLOUDCROF	1	\$150.78	
26106700260000	RCL TRUST	6201 WEATHERGL	1	\$150.78	
26106700190000	REIMCHE TROY A	8535 HEATHER C	1	\$150.78	
26106700130000	ROUSSEL JOHN T	8528 CLOUDCROF	1	\$150.78	
26106700100000	SEGURA TREADWE	8542 CLOUDCROF	1	\$150.78	
26106700300000	SHARLENE DAVID	6214 WINDORAH	1	\$150.78	
26106700320000	SMITH RODNEY R	6221 WINDORAH	1	\$150.78	
26106700290000	STADLER FAMILY	6218 WINDORAH	1	\$150.78	
26106700220000	SULEYMANOV EDU	8547 HEATHER C	1	\$150.78	